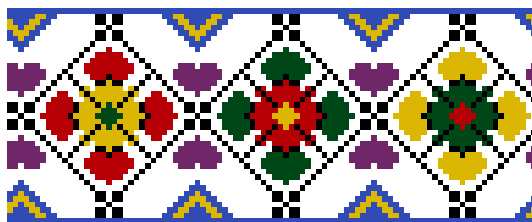


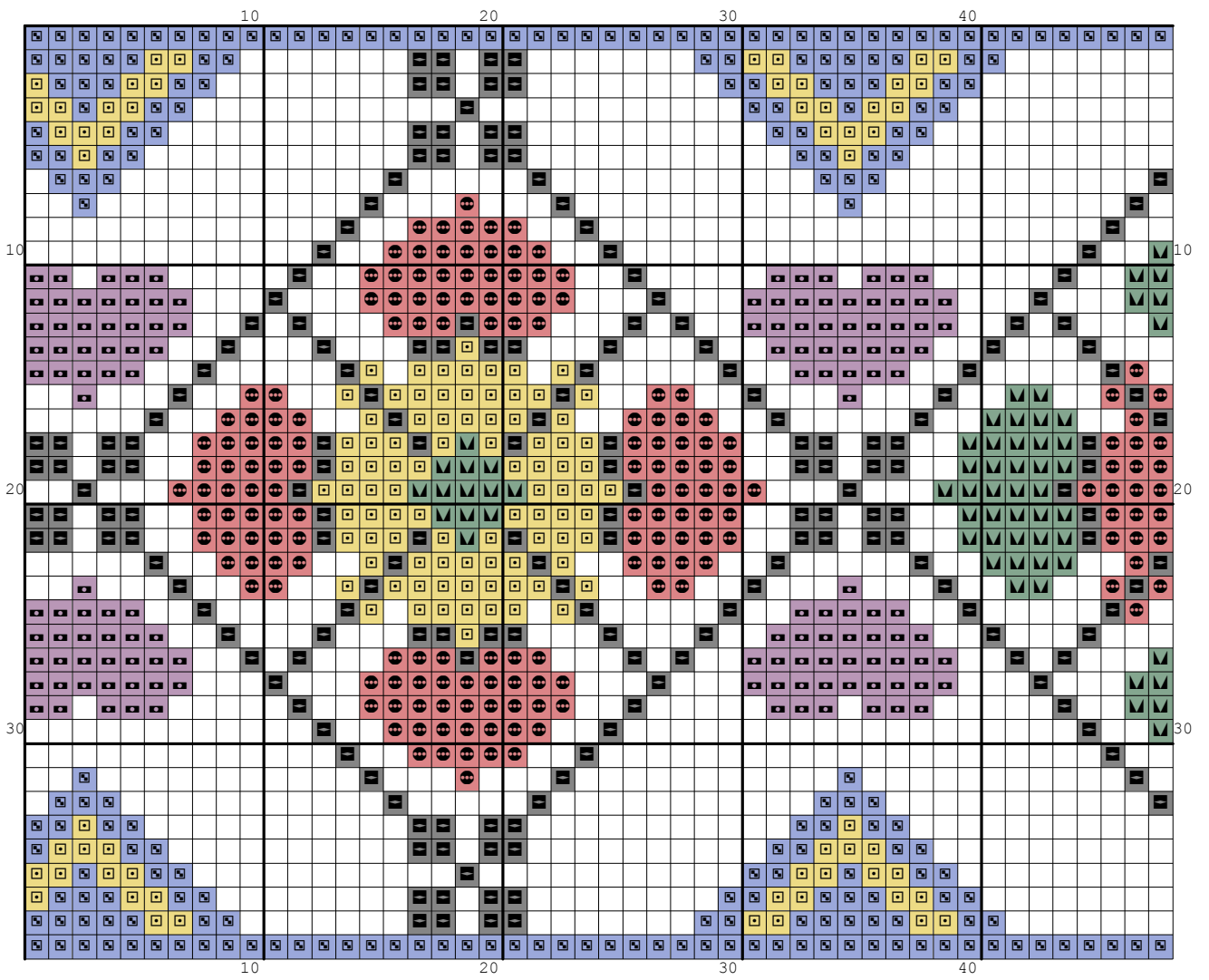
Nazwa: Wzór oparty na motywach warmińsko - mazurskich  
Autor: look4me

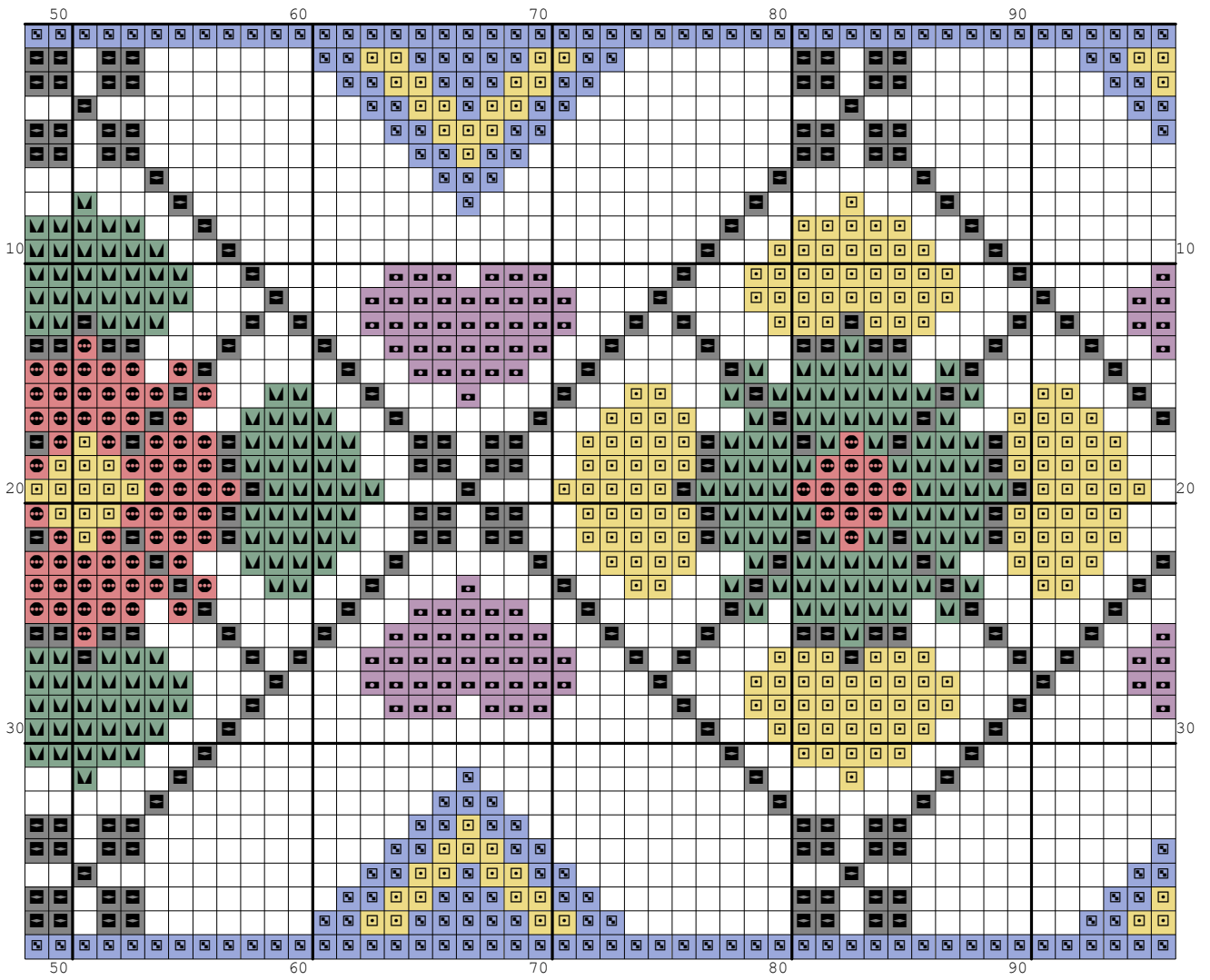
Rozmiar: 96x39  
Kolorów: 7








(PL): Jeżeli użyjesz tego wzoru, będziesz zadowolona/y z efektu i uznasz za stosowne wspomóc rozwój witryny [www.wzory-haftu.pl](http://www.wzory-haftu.pl) możesz wpłacić dowolną kwotę na konto podane w dziale "Kontakt" na wspomnianej stronie.

(EN): If after using this pattern you are happy with the effect and you think that it is worth to support the development of [www.cross-stitch-patterns.eu](http://www.cross-stitch-patterns.eu) website, feel free to donate any amount to the bank account given in the "Contact" section on the abovementioned site.







Symbol	Nr nici	Krzyżyki	Motki 2 nitki	Motki 3 nitki	Motki 6 nitek
	Kanwa	1872	1	1	2
	DMC 208	222	1	1	1
	DMC 310	417	1	1	1
	DMC 666	249	1	1	1
	DMC 701	249	1	1	1
	DMC 726	345	1	1	1
	DMC 3843	390	1	1	1